

Troop 16 November Campout Plan
Quest for the Holy Grail, The Druids Curse
November 6-8 2009
Part II (Maps and Directions)

Table of Contents




Table of Contents	1
Travel Plan	2

Travel Plan

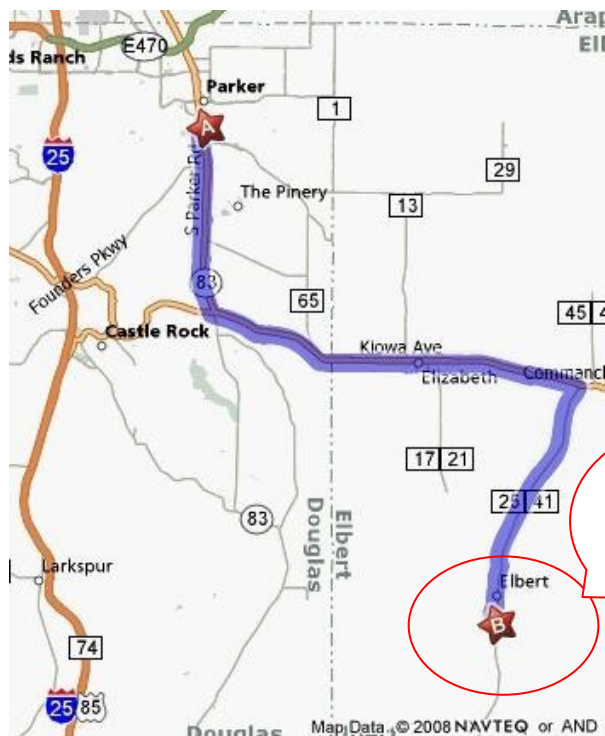
We will meet at PUMC at 16:00 on Friday, then travel by private vehicle to Peaceful Valley Scout Ranch. There will be a roll call and vehicle checkout at the church. Cars will be checked in at the parking area and a final roll call will be made at camp before dark. We will be pulling the large and small troop trailers. As always, Scouts and Adult Leaders will travel in Class A Uniforms to and from the event.

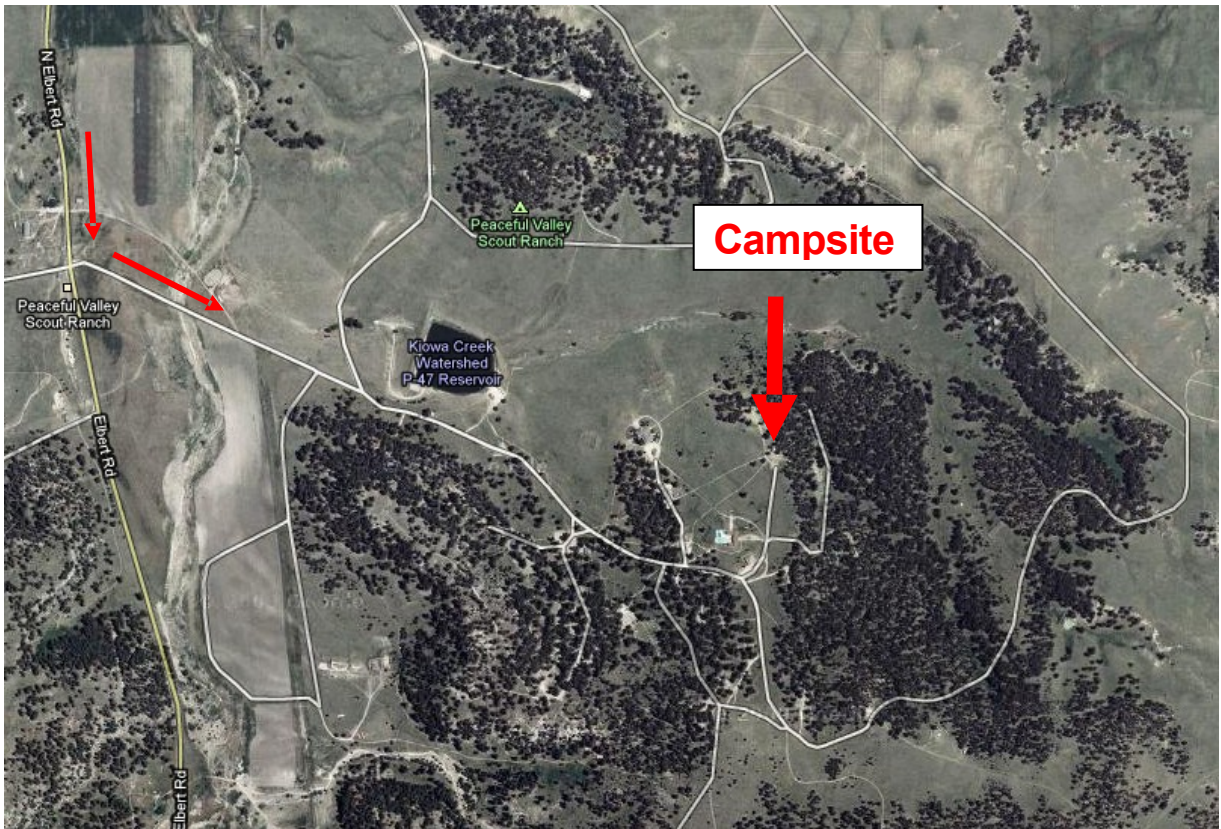
The actual drive time during the pre-trip was 1:00 hour.

The Troop preferred route will be Parker Road (Highway 83) south to Franktown. Turn left at traffic signal at intersection with Highway 86. Continue on Highway 86 through Elizabeth until you come to Elbert Highway on your right (just before the town of Kiowa). Turn right on Elbert Highway and continue through the town of Elbert. Turn left (east) into Peaceful Valley Scout Ranch at the second entrance from Camp Chris Dobbins.

START	Start out going SOUTH on S PINE DR toward S PARKER RD/CO-83 N	0.4 mi
	Turn LEFT onto S PARKER RD/CO-83 S. Continue to follow CO-83 S.	7.6 mi
	Turn LEFT onto CO-86	15.6 mi
	Turn RIGHT onto ELBERT RD/CR-25/CR-41	10.7 mi
END	End at 22799 N Elbert Rd Elbert, CO 80106-9746	

Estimated Time: 49 minutes Estimated Distance: 34.45 miles





We will pack up and leave camp Sunday morning at approximately 10:30 with an expected return to the church around 11:30. There will be a roll call and car checkout at the parking area. Scouts will need to be checked out at the church before leaving.